



Open Archive Toulouse Archive Ouverte

OATAO is an open access repository that collects the work of Toulouse researchers and makes it freely available over the web where possible

This is a publisher's version published in: <http://oatao.univ-toulouse.fr/21739>

Official URL:

<https://doi.org/10.1126/sciadv.aav0486>

To cite this version:

Tiegs, Scott D. and Costello, David M. and Isken, Mark W. [et al.] *Global patterns and drivers of ecosystem functioning in rivers and riparian zones*. (2019) *Science Advances*, 5 (1). eaav0486. ISSN 2375-2548

Any correspondence concerning this service should be sent to the repository administrator: tech-oatao@listes-diff.inp-toulouse.fr

ECOLOGY

Global patterns and drivers of ecosystem functioning in rivers and riparian zones

Scott D. Tiegs*, David M. Costello, Mark W. Isken, Guy Woodward, Peter B. McIntyre, Mark O. Gessner, Eric Chauvet, Natalie A. Griffiths, Alex S. Flecker, Vicenç Acuña, Ricardo Albariño, Daniel C. Allen, Cecilia Alonso, Patricio Andino, Clay Arango, Jukka Aroviita, Marcus V. M. Barbosa, Leon A. Barmuta, Colden V. Baxter, Thomas D. C. Bell, Brent Bellinger, Luz Boyero, Lee E. Brown, Andreas Bruder, Denise A. Bruesewitz, Francis J. Burdon, Marcos Callisto, Cristina Canhoto, Krista A. Capps, María M. Castillo, Joanne Clapcott, Fanny Colas, Checo Colón-Gaud, Julien Cornut, Verónica Crespo-Pérez, Wyatt F. Cross, Joseph M. Culp, Michael Danger, Olivier Dangles, Elvira de Eyto, Alison M. Derry, Veronica Díaz Villanueva, Michael M. Douglas, Arturo Eloegi, Andrea C. Encalada, Sally Entekin, Rodrigo Espinosa, Diana Ethaiya, Verónica Ferreira, Carmen Ferriol, Kyla M. Flanagan, Tadeusz Fleituch, Jennifer J. Follstad Shah, André Frainer Barbosa, Nikolai Friberg, Paul C. Frost, Erica A. Garcia, Liliana García Lago, Pavel Ernesto García Soto, Sudeep Ghate, Darren P. Giling, Alan Gilmer, José Francisco Gonçalves Jr., Rosario Karina Gonzales, Manuel A. S. Graça, Mike Grace, Hans-Peter Grossart, François Guérol, Vlad Gulis, Luiz U. Hepp, Scott Higgins, Takuo Hishi, Joseph Huddart, John Hudson, Samantha Imberger, Carlos Iñiguez-Armijos, Tomoya Iwata, David J. Janetski, Eleanor Jennings, Andrea E. Kirkwood, Aaron A. Koning, Sarian Kosten, Kevin A. Kuehn, Hjalmar Laudon, Peter R. Leavitt, Aurea L. Lemes da Silva, Shawn J. Leroux, Carri J. LeRoy, Peter J. Lisi, Richard MacKenzie, Amy M. Marcarelli, Frank O. Masese, Brendan G. McKie, Adriana Oliveira Medeiros, Kristian Meissner, Marko Miliša, Shailendra Mishra, Yo Miyake, Ashley Moerke, Shorok Mombrikotb, Rob Mooney, Tim Moulton, Timo Muotka, Junjiro N. Negishi, Vinicius Neres-Lima, Mika L. Nieminen, Jorge Nimptsch, Jakub Ondruch, Riku Paavola, Isabel Pardo, Christopher J. Patrick, Edwin T. H. M. Peeters, Jesus Pozo, Catherine Pringle, Aaron Prussian, Estefania Quenta, Antonio Quesada, Brian Reid, John S. Richardson, Anna Rigosi, José Rincón, Geta Rîşnoveanu, Christopher T. Robinson, Lorena Rodríguez-Gallego, Todd V. Royer, James A. Rusak, Anna C. Santamans, Géza B. Selmeczy, Gelas Simiyu, Agnija Skuja, Jerzy Smykla, Kandikere R. Sridhar, Ryan Sponseller, Aaron Stoler, Christopher M. Swan, David Szlag, Franco Teixeira-de Mello, Jonathan D. Tonkin, Sari Uusheimo, Allison M. Veach, Sirje Vilbaste, Lena B. M. Vought, Chiao-Ping Wang, Jackson R. Webster, Paul B. Wilson, Stefan Woelfl, Marguerite A. Xenopoulos, Adam G. Yates, Chihiro Yoshimura, Catherine M. Yule, Yixin X. Zhang, Jacob A. Zwart†

Copyright © 2019
The Authors, some
rights reserved;
exclusive licensee
American Association
for the Advancement
of Science. No claim to
original U.S. Government
Works. Distributed
under a Creative
Commons Attribution
NonCommercial
License 4.0 (CC BY-NC).

River ecosystems receive and process vast quantities of terrestrial organic carbon, the fate of which depends strongly on microbial activity. Variation in and controls of processing rates, however, are poorly characterized at the global scale. In response, we used a peer-sourced research network and a highly standardized carbon processing assay to conduct a global-scale field experiment in greater than 1000 river and riparian sites. We found that Earth's biomes have distinct carbon processing signatures. Slow processing is evident across latitudes, whereas rapid rates are restricted to lower latitudes. Both the mean rate and variability decline with latitude, suggesting temperature constraints toward the poles and greater roles for other environmental drivers (e.g., nutrient loading) toward the equator. These results and data set the stage for unprecedented "next-generation biomonitoring" by establishing baselines to help quantify environmental impacts to the functioning of ecosystems at a global scale.

INTRODUCTION

Organic carbon that enters river and riparian ecosystems meets one of many fates: It is mineralized and released to the atmosphere as CO₂ or CH₄, incorporated into local food webs, or routed downstream to

join long-term storage pools in marine or lake sediments (1–3). The rate at which organic carbon is processed determines which of these fates predominates and has important implications for the functioning of ecosystems from local to global scales. While rates vary widely over broad spatial scales (4, 5), logistical constraints and standardization issues have hindered elucidation of global patterns and environmental controls. Many investigations have explored organic-matter processing

*Corresponding author. Email: tiegs@oakland.edu

†Author affiliations noted in Supplementary Materials.

in streams and rivers (fig. S1), but methodological differences among studies—especially the use of different substrates—have impeded mechanistic understanding of what drives carbon processing rates at large spatial scales. For example, the quality of leaf litter used in decomposition assays varies systematically across the planet, potentially masking patterns in carbon processing attributable to extrinsic factors such as microbial community structure and environmental conditions—factors that are increasingly affected by human activities. Because different substrates are used across studies, we have an underdeveloped knowledge of the degree to which rates are controlled by substrate quality or by the microbial communities and environmental conditions that characterize a particular location. Overcoming these methodological limitations and filling these knowledge gaps is necessary to gauge large-scale controls on carbon processing, establish baselines for emerging global assessment initiatives (e.g., Intergovernmental Science-Policy Platform on Biodiversity and Ecosystem Services and Intergovernmental Panel on Climate Change), and accurately quantify human impacts to the global carbon cycle (6–8).

To these ends, we report findings from the first global Cellulose Decomposition Experiment (CELLEX), which combines a rigorously

standardized bioassay with a peer-sourced network of research professionals to evaluate carbon processing rates in Earth's rivers and riparian zones. We applied a standardized cotton-strip assay (9, 10) simultaneously in river channels and adjacent riparian habitats to quantify microbial decomposition of cellulose, the most abundant polymer on Earth, the main component of terrestrial plant litter, and an important source of greenhouse gas emissions from riverine ecosystems (11). This assay quantifies the inherent capacity of ecosystems to process organic carbon—their decomposition potential—and integrates the influences of microbial community structure and environmental factors such as nutrient availability, temperature, and moisture on microbial activity. A key advantage of the assay is that it lacks variation in substrate attributes such as nutrient content and toughness. Experimental materials were distributed to 150 researchers in the CELLEX Consortium from ~125 institutions who deployed and retrieved the strips at more than 1000 river and riparian sites. Cotton strips were then returned to the coordinating laboratory for standardized measurements of the degree of decomposition. Field sites spanned 140° of latitude, were located on all continents, and included each of Earth's major biomes (Fig. 1A). Because we used an identical assay across all sites,

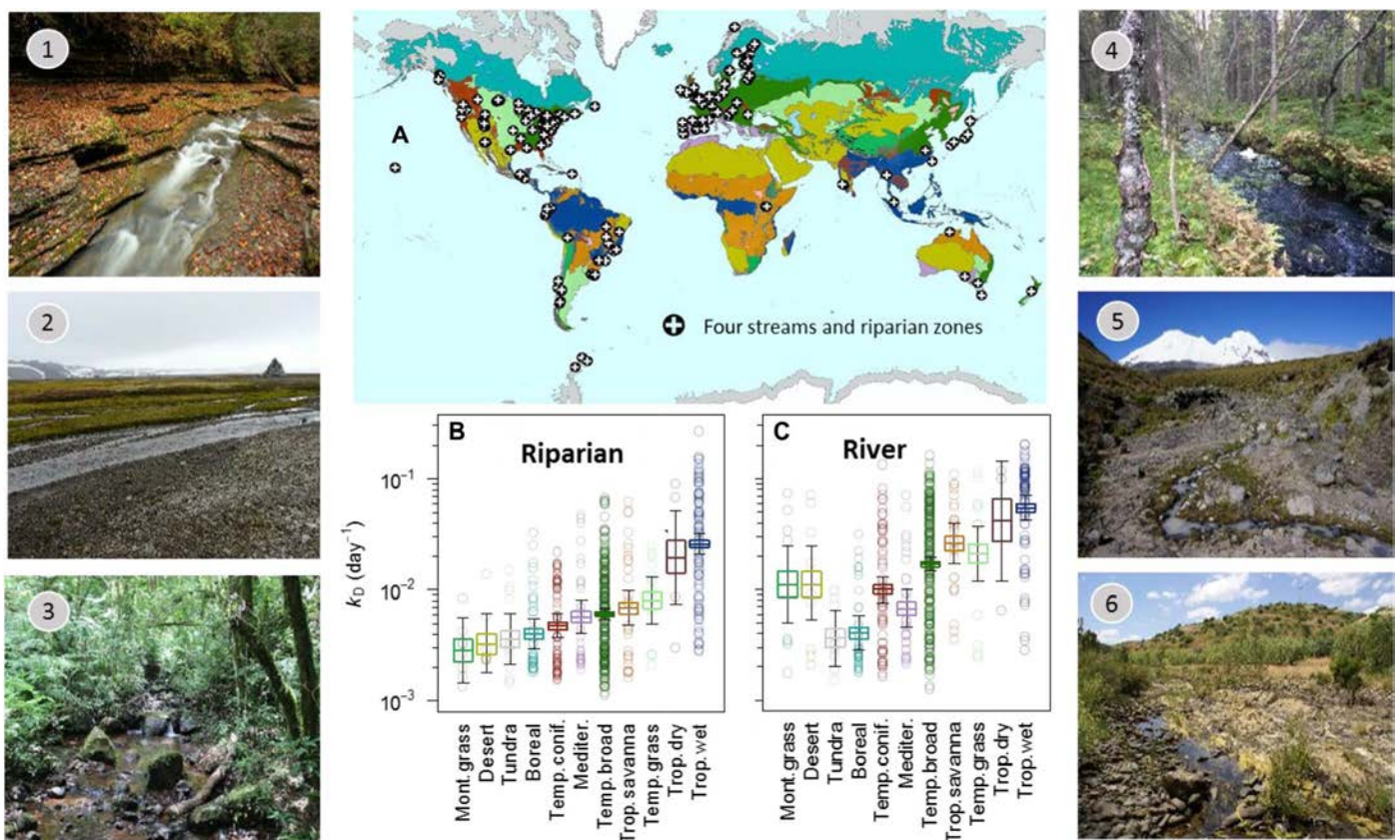


Fig. 1. Global distribution of field sites, mean decomposition rates across biomes, and photos of select field sites. More than 500 river-riparian pairs ($n = 514$ river, $n = 533$ riparian) were located in approximately 40 countries, on each continent, and spanned more than 140° of latitude. Colors correspond to Earth's major terrestrial biomes (A). The estimated mean decomposition rates ($\pm 95\%$ credible intervals) of cotton strips (k_D) varied across biomes in riparian zones (B) and their adjacent rivers (C). Photographs are shown for rivers and zones in temperate broadleaf forests (1), tundra (2), tropical wet forests (3), boreal forests (4), montane grassland (5), and Mediterranean ecosystems (6). Photo credits: Stream 1. Olivier Dangles, Centre d'Ecologie Fonctionnelle et Evolutive, IRD, CNRS. Stream 2. Jerzy Smykla, Institute of Nature Conservation, Polish Academy of Sciences. Stream 3. Luis Hepp, Department of Biological Sciences, Regional Integrated University of Upper Uruguay and Missions. Stream 4. Jukka Aroviita, Finnish Environment Institute (SYKE). Stream 5. Scott Tiegs, Department of Biological Sciences, Oakland University. Stream 6. Manuel Graça, MARE—Marine and Environmental Sciences Centre, University of Coimbra.

we were also able to relate the wide-ranging processing rates that we observed to large-scale environmental drivers of carbon processing in a biogeographical and climatic context.

RESULTS AND DISCUSSION

We found that Earth's major biomes have distinct carbon processing signatures in both rivers and riparian zones (Fig. 1). Rates are lowest in cold biomes, such as tundra and boreal forests, whereas those in tropical forests (both wet and dry) are up to an order of magnitude greater; most temperate biomes are bracketed by these extremes (Fig. 1, B and C). These patterns suggest that—similar to terrestrial ecosystems—broad-scale climatic factors, temperature and precipitation, are master variables that set the boundaries of carbon processing rates in rivers and riparian zones at the global scale. Biome identity accounted for a similar amount of variance in rivers and riparian habitats (30% versus 28%, respectively); this similarity is notable because the biome concept was originally developed for terrestrial rather than aquatic ecosystems (12). This highlights the close coupling between riverine ecosystems, their catchments and regional climate, and the utility of the biome concept for river and riparian ecosystems.

Knowledge of ecosystem functioning in tropical rivers and riparian zones is poorly developed, even though these rivers constitute >50% of Earth's runoff (12) and form a major carbon input to the global ocean (13). Moreover, tropical rivers are hot spots for CO₂ evasion (14, 15), yet whether the predominant source is instream decomposition of organic matter (dissolved and particulate) derived from terrestrial plants, or CO₂ imported from terrestrial root and soil respiration (14), is largely unknown. Very high terrestrial primary production in tropical forests generates vast quantities of plant litter, and our data show that cellulose—

the most abundant litter constituent—can be very effectively processed by microbial communities in tropical rivers and riparian areas (Fig. 1, B and C). This rapid processing occurred despite the fact that the cellulose substrate does not supply substantial amounts of nutrients (e.g., nitrogen and phosphorus) to facilitate decomposition. Although the cellulose used in our assay differed in quality from the litter that enters tropical rivers, the exceptionally rapid decomposition that we observed is a novel line of evidence suggesting that the microbial processing of plant material is a major CO₂ source (11, 14, 15).

We found clear patterns of processing rates with latitude; both the upper limit of processing rates and variability among rivers and riparian zones decrease with latitude (Fig. 2, A and B). These results are evidenced by the increasing slope of each quantile in these relationships (Fig. 2, A and B, insets), revealing that carbon processing can be slow anywhere on the planet, whereas rapid rates are reached only at low latitudes. Dampening of peak rates with distance from the equator suggests tighter climatic constraints toward the poles—such as temperature limitation—and that additional factors (e.g., nutrient availability, pH, and microbial-community structure) come into play toward the equator.

Across a broad range of quantiles, the slope of relationships between processing rates and latitude is greater in rivers compared to riparian zones, a finding that suggests that rivers are more sensitive to parameters that covary with latitude (e.g., temperature) (Fig. 2, A and B, insets). For sites with the slowest decomposition rates (i.e., quantiles 5 to 10%), the lack of a slope illustrates that slow rates can be found across the broad range of latitudes that we examined, in both rivers and riparian zones. For the majority of the data (quantiles 15 to 80%), the slope of the relationship between rates and latitude is greater in rivers, evidenced by nonoverlapping credible intervals between

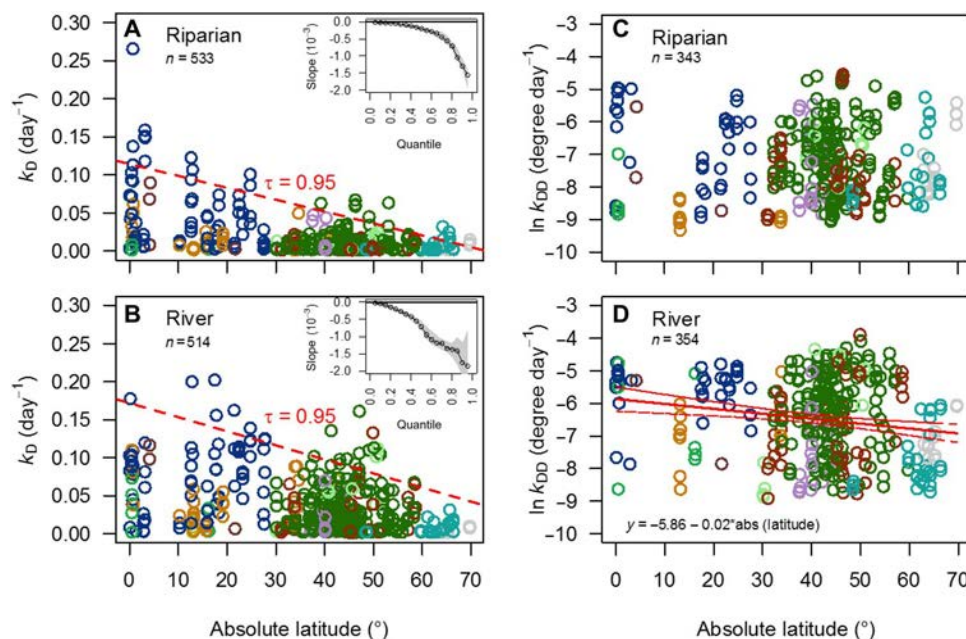


Fig. 2. Relationships between absolute latitude and decomposition rates in riparian zones and rivers. Quantile regression in riparian zones (A) and rivers (B) showing decomposition rates per day (k_D) versus latitude and the 95th quantile (dashed line). Inset panels (A) and (B) show the increasing slope of regression lines with each 5-centile. In each habitat, slow decomposition can be observed regardless of latitude; latitude, however, imposes a strong upper constraint on decay rates. When the effect of temperature is removed by expressing decomposition on a per-degree-day basis (k_{DD}) (C and D), there is no significant relationship between decomposition and latitude in riparian zones (C), and a negative relationship is observed with latitude in rivers (D). Colors match the biomes shown in Fig. 1.

these two habitat types; this greater slope indicates that decomposition in rivers is more sensitive to changes in latitude. For ecosystems that decompose the fastest (i.e., quantiles >85%), the variability among rivers is large and our estimate of the relationships with latitude is not well constrained and is therefore not significantly different between rivers and riparian zones.

In an extensive meta-analysis of data on leaf-litter processing, rates of microbial processing in rivers increased with latitude even after accounting for strong covariation of temperature (5). The proposed mechanism for the increase was physiological adaptation that enables river microbes to remain active during periods of peak litter inputs despite low temperatures. However, our data show that when a standard substrate is used to control for variation in litter quality, temperature-normalized processing rates in rivers decline with latitude (Fig. 2D), with the normalized rates, on average, being 4.1 times greater near the equator than at our highest latitude sites. No relationship was observed in riparian zones (Fig. 2C), suggesting that in these habitats, the environmental variables that covary with latitude are of secondary importance to others, such as moisture limitation as a prime factor. In rivers and riparian zones, we documented considerable variation in temperature-normalized rates across most latitudes, highlighting the variety of environmental conditions that influenced decomposition rates, and the need for additional information beyond geographic location to explain them.

Differences in litter substrate choice are a plausible explanation for contrasting results between our study—which made use of a single standard substrate—and the global meta-analysis—which synthesized studies across many locally collected types of leaf litter. Plant traits vary systematically across large spatial scales (16, 17), as does the quality of riparian leaves and litter (18), both of which increase with latitude. For example, the phosphorus content of leaves increases with distance from the equator (18), a pattern that could foster large-scale adaptations that enable stream microbes to decompose substrates of poor nutrient content, such as litter rich in cellulose and lignin. Together with previous results, ours suggest that, independently of temperature, the inherent capacity of ecosystems to decompose organic matter declines with latitude but that systematic global variation in litter traits might mask these effects and cause apparent decomposition rates to increase with latitude. This highlights the necessity for a standard substrate when using decomposition assays as part of large-scale bioassessment protocols.

Rivers and their riparian zones are closely connected through reciprocal exchanges of organic carbon, and processes in one habitat have ramifications for the other (19, 20). To better understand their relative functioning, we evaluated the log ratio of carbon processing rates in paired river-riparian sites. We found that rivers have rates (k_D) that are, on average, nearly twice those of the adjacent riparian habitats (median River k_D /Riparian k_D = 1.77, n = 514 sites) (Fig. 3). Standardizing for temperature (k_{DD}) does not change the magnitude of this disparity (median River k_{DD} /Riparian k_{DD} = 1.86, n = 314 sites), reflecting the strong correlation between average air and water temperature. The ratio varies widely across sites, ranging from 70 to 0.05 (fig. S2). Rates in riparian zones of montane grasslands and deserts are extremely slow (Fig. 1B), whereas rates in the adjacent river channels are similar to the global average (Figs. 1C and 3). In contrast, cellulose-decomposition rates in only 2.5% of riparian zones significantly exceeded those in rivers (fig. S2). Given the exchange of carbon between rivers and riparian zones, and their discrepancy in processing potentials between these two habitats, streams are hot spots for carbon processing, while riparian

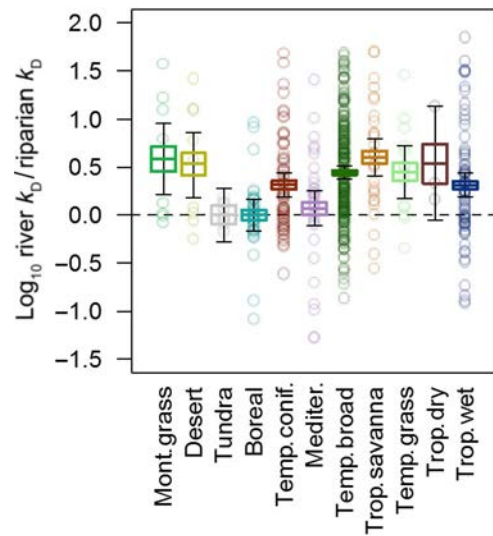


Fig. 3. The log response ratio of river decomposition (k_D) to riparian decomposition (k_D). Bayesian estimates of median ratios are shown as horizontal lines, with 50 and 95% credible intervals of the median as the box and whiskers, respectively. Open symbols show individual riparian-river pairs color-coded by biome (n = 514). Values greater than zero (dashed line) indicate significantly more rapid decomposition in rivers relative to their riparian zones.

zones, given their relatively slow carbon turnover, likely serve as sources of organic carbon well past periods of organic matter input (e.g., autumn leaf fall in temperate zones). The magnitude of river/riparian processing rates shows no relationship with latitude (fig. S3A), unless the effects of temperature are removed and then a negative relationship emerges (fig. S3B). This finding indicates that the relative difference in temperature-adjusted processing between habitats is, on average, greater toward the poles. Variation in the relative processing rates of rivers and riparian zones highlights functional biodiversity across broad latitudinal gradients and across Earth's biomes. And in many biomes this variation highlights the importance of local habitat diversity to create heterogeneity in ecosystem functioning at a landscape scale.

The variable relative processing rates in coupled riparian-river habitats may be caused by differential temperature sensitivity between rivers and riparian zones. The significantly greater apparent activation energy calculated for river channels (0.68 eV) shows that, on average, carbon processing in river habitats is far more sensitive to temperature than in riparian zones (0.40 eV; Fig. 4). This terrestrial-aquatic disparity mirrors patterns in a meta-analysis of whole-ecosystem respiration (21) and our river data almost exactly match the theoretically expected activation energy according to the metabolic theory of ecology (22). These disparities suggest that different drivers are at play in river channels and riparian habitats, with water limitation being an obvious contender. This moisture-limitation hypothesis is further supported by similar decomposition rates observed in riparian and river habitats of cool mesic biomes, such as tundra and boreal forests (Fig. 3).

Because different factors constrain carbon processing in riparian and river habitats, responses to environmental change could differ greatly among biomes and habitats. In particular, warming and aridity are both predicted to increase across vast areas of the planet (23), a climatic trend that should increase processing rates in rivers

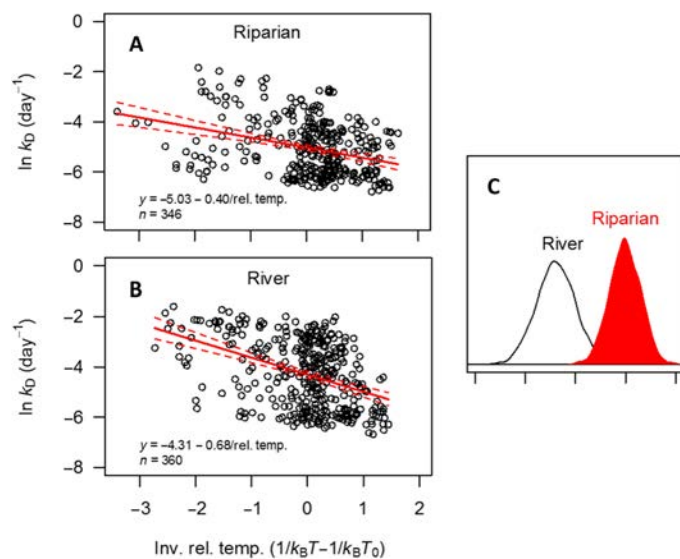


Fig. 4. Temperature sensitivity of cellulose decomposition in riparian zones and rivers. Arrhenius plots illustrating differences in the apparent activation energies of decomposition in riparian zones (A), 0.40 eV and rivers (B), 0.68 eV. (C) Posterior distribution of the slope estimates (i.e., apparent activation energy estimates), indicating that neither of the slopes overlap with zero (i.e., they are statistically significant) and that there is very little overlap between the slope estimates for decomposition in rivers and riparian zones.

yet decrease them in riparian zones. This dimension of relative processing rates between rivers and riparian zones—differential responses of a process between habitats under environmental change—represents a yet-to-be-explored portfolio effect (24) arising from habitat diversity that stabilizes mean processing rates at the landscape scale.

CONCLUSIONS

The >1000 river and riparian sites used in our study were deemed relatively free of human impacts. Consequently, by using an identical assay at all sites, we can unambiguously ascribe the variability that we document to naturally variable environmental conditions and biotic communities. Importantly, these environmental drivers include those that are increasingly affected by human activities such as temperature and moisture availability. This sensitivity to anthropogenically affected variables gives our data added value as a baseline for the biomonitoring of a functional ecosystem property. Moreover, the validated utility of combining a straightforward field assay with a large peer-sourced network of researchers, in tandem with the baseline dataset presented here, sets the scene for gauging ecosystem functioning at large scales to monitor impacts of global environmental change. In doing so, we address pressing needs for effective process-based tools (25) that can be deployed at large scales (6) by emerging international assessment programs (e.g., Intergovernmental Science-Policy Platform on Biodiversity and Ecosystem Services and Intergovernmental Panel on Climate Change) (7).

MATERIALS AND METHODS

Experimental approach

Our coordinated experiment used a peer-sourcing approach whereby each of approximately 150 research teams distributed worldwide de-

ployed a standardized assay in four rivers and their adjacent riparian zones. With this approach, we retrieved samples from 514 rivers and 533 riparian zones (1047 sites in total). Despite the unprecedented global coverage of our field experiment, gaps in spatial coverage exist as a result of a lack of available researchers in some areas (e.g., the Siberian steppe) or scarcity of flowing water ecosystems (e.g., Saharan Africa). Partners were drawn from professional relationships and research networks and by responses to invitations posted on the websites of professional organizations (e.g., the Society for Freshwater Science and Ecological Society of America). Each researcher was sent a kit that contained experimental materials, along with a detailed field and laboratory protocol. The distributed cotton strips were incubated in the field for approximately 4 weeks during 2015 and 2016 and shipped to the Aquatic Ecology Laboratory at Oakland University for analysis.

Decomposition assay

The cotton strip assay was chosen because the strips are composed of greater than 95% cellulose—the most abundant polymer on Earth and the main constituent of terrestrially derived leaf litter (15)—and because the assay is readily standardized (9). Such standardization is essential because failure to standardize so blurs large-scale patterns in the capacity of rivers and riparian zones to process organic carbon. For example, among the 2182 studies related to decomposition in riverine ecosystems published since 2000, only a handful have rates that are truly comparable (fig. S1). Even within studies, the attribution of differences in carbon processing rate to variation in environmental conditions is questionable because of the confounding effects that arise from variation in litter quality across space. This is inherently problematic at large spatial scales where there is growing appreciation of variation in leaf traits (16), including riparian litter (18). By using an identical cotton strip assay across all sites, we provide information on the capacity of ecosystems to process organic carbon. Additional reasons for using this assay are its sensitivity to environmental conditions, including temperature and nutrient availability (26), ease of use, suitability for both terrestrial and aquatic habitats, and the fact that dry samples can be readily shipped.

A trade-off of using any standardized organic matter in studies that span large spatial scales is that the quality of the standard organic matter will differ from natural inputs because their quality varies across large scales (18). In addition, because the quantity of organic matter inputs also varies spatially, decomposition assays do not necessarily reflect the quantity of organic matter that is being decomposed. Rather, the cotton strip assay and others (e.g., litter bag assays) are designed to quantify the relative capacity of ecosystems to decompose organic matter (i.e., decomposition potential) (10). Another trade-off is that the cotton strip assay isolates the activity of microbial heterotrophs and does not directly account for decomposition from the feeding activity of invertebrates (9).

The cotton strip assay relies on quantifying tensile strength loss of the cotton fabric, a process that reflects the microbial catabolism of cellulose (9, 10). Individual cotton strips (8.0 cm by 2.5 cm) were prepared from bolts of 12-ounce, heavy-weight cotton fabric (Style 548; Fredrix, Lawrenceville, GA, USA) and were each 28 threads in width (9). Strips were shipped to each partner along with reference strips that were not incubated in the field to obtain estimates of the initial tensile strength and to detect any changes occurring during shipping. Tensile strength was determined by placing each cotton strip in the jaws of a Mark-10 MG100 tensiometer mounted to a motorized test stand and pulling

them at a rate of 2 cm/min (9) until the strips tore. The maximum tensile strength (T_{MAX}) for each strip was recorded (in units of mass) and used for subsequent calculations. Individual T_{MAX} values from control and incubated strips were used in a hierarchical Bayesian model to calculate estimates of carbon processing rates (k).

Field methods

Each partner deployed the assay in four or more reference rivers (i.e., those characterized by minimal human impacts) and their adjacent riparian zones (i.e., the semi-aquatic terrestrial ecosystems immediately adjacent to permanent water bodies) during a time of the year when there were peak inputs of terrestrially derived organic matter (e.g., autumn leaf fall in temperate deciduous forests and the dry season in tropical dry forests). In each river, four replicate cotton strips were attached via cable binders and twine to stakes that were hammered into the river substrate of riffle or riffle-type habitats. This procedure was repeated in the riparian area adjacent to the river habitats where the cotton strips were deployed. In riparian zones, cotton strips were placed on the soil surface to simulate organic-matter input by senescent leaves. The cotton strips were distributed evenly between two locations in each habitat (i.e., each site) (2 cotton strips per location, 2 locations per habitat, 2 habitats, 4 rivers/riparian zones, and 32 cotton strips total per partner) that were separated by a distance of approximately five to seven bankfull channel widths. The strips were removed after approximately 3 to 4 weeks, an amount of time that was estimated to result in approximately 50% tensile strength loss; this degree of decomposition is believed to maximize the sensitivity of the assay to variation in environmental conditions (9).

Temperature data and Geographic Information System

In most instances, a temperature logger was placed in each river and each riparian zone and programmed to record hourly. This protocol yielded temperature data for 352 river and 343 riparian sites. Data from each logger were explored using a Python-based tool that facilitated data preprocessing tasks such as enforcement of a common date format, ensuring that all temperature readings were in centigrade, and transfer and consolidation of raw temperature readings from hundreds of files into a single database. The statistical computing package R was used to develop scripts for data processing, summarization, and plotting. Temperature readings for periods in which the logger was out of the water were removed, as were readings associated with obvious logger malfunctions. Plots and summary statistics were reviewed to confirm that remaining temperature readings were valid. Degree days were computed using positive temperature readings to generate daily mean temperatures and summing them.

Geographic Information System (GIS) and latitude and longitude data were used to ascribe a biome to each field site using a modified classification scheme (27) that was downloaded from the Environmental Systems Research Institute (ESRI) map server. In a small number of instances, field sites were located near transitional areas between two biomes and were noted by project partners as possibly having an incorrect biome classification. For the sake of repeatability, the original GIS-based biome classification method was retained. Latitude and longitude were determined at each river-riparian pair by each project partner using GPS or geo-referenced satellite photographs. A spatial join was performed between the biome layer and that which displayed the geographical location of the field sites. Biomes that do not have rivers and riparian zones (e.g., lakes) were not included in analyses.

Statistical analyses

Decomposition rates (k) were estimated from river and riparian zones separately using a standard exponential decay function and a Bayesian hierarchical model

$$g(k_j, P_j, T^C) = e^{-k_j \times P_j + T^C} \\ [k_j, \sigma, T^C, \sigma^C | P_j, y_{ij}, y_i^C] \\ \propto \text{lognormal}(y_{ij} | \log(g(k_j, P_j, T^C)), \sigma) \times \text{lognormal}(y_i^C | T^C, \sigma^C) \\ \times \text{lognormal}(k_j | -4.35, 2.09) \times \text{lognormal}(T^C | 4.2, 32) \\ \times \text{uniform}(\sigma | 0, 100) \times \text{uniform}(\sigma^C | 0, 100)$$

where y_{ij} is the natural log tensile strength measured on the i th replicate strip from the j th site, k_j is the site-specific decomposition rate (k_D , in units of 1/day), T^C is the natural log T_{MAX} of all the replicate incubated control strips (y_i^C), and P_j is the period of exposure in days. Because of the limited number of cotton strips at each site, individual error terms could not be modeled for each river or riparian habitat, but single pooled SD for incubated (σ) and control cotton strips (σ^C) provided adequate fits for all cotton strips. A similar model was used to calculate temperature-corrected decomposition rates (k_{DD} , 1/degree day), where the exposure period (P_j) was the mean daily temperature accumulated over the incubation period ($^{\circ}\text{C} > 0$) and the priors on k_j were $\alpha = -6.57$ and $\beta = 2.24$. Error terms were assigned relatively uninformative priors, but T^C and k were given informed priors. The prior for T^C was derived from data for control strips of the same material used in previous studies, and the inflated β was used to account for any potential handling damage that may have occurred in this unique study. For priors on k , we used a global synthesis of leaf litter breakdown (5) to place constraints on our expectations of decomposition rates (28). Decomposition rates were assumed to be distributed log-normally and were given mean natural log k_D and k_{DD} (α) that matched the values from the literature (5); however, the SD of natural log k_D and k_{DD} (β) was inflated (β prior = $\sigma \ln(k) \times 2$) to slightly reduce the information content of the prior (28), which was done to reflect potential differences in decomposition rates between litter and cotton strips. The ratio of decomposition rates in river and riparian habitats was calculated for each complete river-riparian pair. Bayesian models were implemented in JAGS using the R package rjags. Three parallel chains with different initial conditions were run, chains were evaluated for convergence and mixing, and posterior distributions from 10,000 samples were generated.

Decomposition rates from each river-riparian site combination were then used in subsequent analyses to assess patterns in decomposition across biome, latitude, and temperature. Estimates of mean (and 95% credible interval) decomposition rates and ratios of river-riparian rates were compared across biomes using a Bayesian implementation of linear models via the brms function in R. Similarly, linear regressions between k_D and the inverse relative temperature (normalized to 10 $^{\circ}\text{C}$) and k_{DD} and latitude were completed with the brms package. The slope of the relationship between temperature and $\ln(k_D)$ is activation energy (E_a), and values of E_a were contrasted between riparian- and river-incubated cotton strips by comparing the posterior distributions of those parameters. Variance explained (i.e., Bayesian R^2) by a factor (e.g., biomes) was calculated according to published procedures (29). All decomposition rates and river-riparian ratio values were log-transformed before fitting linear models. Standard decomposition rates (k_D) exhibited heterogeneous variance across latitudes, and so we used quantile regression to estimate relationships between k_D

and latitude. We used the `quantreg` package in R to model the linear slope of the k_D versus latitude regression at 5-centile increments.

SUPPLEMENTARY MATERIALS

Supplementary material for this article is available at <http://advances.sciencemag.org/cgi/content/full/5/1/eaav0486/DC1>

Fig. S1. Exponential increase in the number of articles addressing organic matter decomposition in rivers during the past two decades.

Fig. S2. Scatterplot of decomposition rates per day in rivers versus riparian zones and a 1:1 line.

Fig. S3. Relative carbon processing rates between rivers and their riparian zones across latitudes.

REFERENCES AND NOTES

- V. Galy, B. Peucker-Ehrenbrink, T. Eglington, Global carbon export from the terrestrial biosphere controlled by erosion. *Nature* **521**, 204–207 (2015).
- M. Meybeck, Global analysis of river systems: From earth system controls to anthropocene syndromes. *Philos. Trans. R. Soc. Lond. B Biol. Sci.* **358**, 1935–1955 (2003).
- L. J. Tranvik, J. A. Downing, J. B. Cotner, S. A. Loiselle, R. G. Striegl, T. J. Ballatore, P. Dillon, K. Finlay, K. Fortino, L. B. Knoll, P. L. Kortelainen, T. Kutser, S. Larsen, I. Laurion, D. M. Leech, S. Leigh McCallister, D. M. McKnight, J. M. Melack, E. Overholt, J. A. Porter, Y. Prairie, W. H. Renwick, F. Roland, B. S. Sherman, D. W. Schindler, S. Sobek, A. Tremblay, M. J. Vanni, A. M. Verschoor, Eddie von Wachenfeldt, G. A. Weyhenmeyer, Lakes and reservoirs as regulators of carbon cycling and climate. *Limnol. Oceanogr.* **54**, 2298–2314 (2009).
- G. Woodward, M. O. Gessner, P. S. Giller, V. Gulis, S. Hladyz, A. Lecerf, B. Malmqvist, B. G. McKie, S. D. Tiegs, H. Cariss, M. Dobson, A. Eloegi, V. Ferreira, M. A. S. Graça, P. Fleituch, J. O. Lacoursière, M. Nistorescu, J. Pozo, G. Risnoveanu, M. Schindler, A. Vadineanu, L. B.-M. Vought, E. Chauvet, Continental-scale effects of nutrient pollution on stream-ecosystem functioning. *Science* **336**, 1438–1440 (2012).
- J. J. Follstad Shah, J. S. Kominoski, M. Ardón, W. K. Dodds, M. O. Gessner, N. A. Griffiths, C. P. Hawkins, S. L. Johnson, A. Lecerf, Carri J. LeRoy, D. W. P. Manning, A. D. Rosemond, R. L. Sinsabaugh, C. M. Swan, J. R. Webster, L. H. Zeglin, Global synthesis of the temperature sensitivity of leaf litter breakdown in streams and rivers. *Glob. Chang. Biol.* **23**, 3064–3075 (2017).
- M. C. Jackson, O. L. F. Weyl, F. Altermatt, I. Durance, N. Friberg, A. J. Dumbrell, J. J. Piggott, S. D. Tiegs, K. Tockner, C. B. Krug, P. W. Leadley, G. Woodward, Recommendations for the next generation of global freshwater biological monitoring tools. *Adv. Ecol. Res.* **55**, 615–636 (2016).
- S. Diaz, U. Pascual, M. Stenseke, B. Martín-López, R. T. Watson, Z. Molnár, R. Hill, K. M. A. Chan, I. A. Baste, K. A. Brauman, S. Polasky, A. Church, M. Lonsdale, A. Larigauderie, P. W. Leadley, A. P. E. van Oudenhoven, F. van der Plaats, M. Schröter, S. Lavorel, Y. Aumeeruddy-Thomas, E. Bukvareva, K. Davies, S. Demissew, G. Erpul, P. Failler, C. A. Guerra, C. L. Hewitt, H. Keune, S. Lindley, Y. Shirayama, Assessing nature's contributions to people. *Science* **359**, 270–272 (2018).
- Millennium Ecosystem Assessment, *Ecosystems and Human Well-Being: Synthesis* (Island Press, 2005).
- S. D. Tiegs, J. E. Clapcott, N. A. Griffiths, A. J. Boulton, A standardized cotton-strip assay for measuring organic-matter decomposition in streams. *Ecol. Indic.* **32**, 131–139 (2013).
- S. J. Imberger, R. M. Thompson, M. R. Grace, Searching for effective indicators of ecosystem function in urban streams: Assessing cellulose decomposition potential. *Freshw. Biol.* **55**, 2089–2106 (2010).
- N. D. Ward, R. G. Keil, P. M. Medeiros, D. C. Brito, A. C. Cunha, T. Dittmar, P. L. Yager, A. V. Krusche, J. E. Richey, Degradation of terrestrially derived macromolecules in the Amazon River. *Nat. Geosci.* **6**, 530–533 (2013).
- W. K. Dodds, K. Gido, M. R. Whiles, M. D. Daniels, B. P. Grudzinski, The stream biome gradient concept: Factors controlling lotic systems across broad biogeographic scales. *Freshw. Sci.* **34**, 1–19 (2015).
- B. Schlünz, R. R. Schneider, Transport of terrestrial organic carbon to the oceans by rivers: Re-estimating flux- and burial rates. *Int. J. Earth Sci.* **88**, 599–606 (2000).
- P. A. Raymond, J. Hartmann, R. Lauerwald, S. Sobek, C. McDonald, M. Hoover, D. Butman, R. Striegl, E. Mayorga, C. Humborg, P. Kortelainen, H. Dürr, M. Meybeck, P. Ciais, P. Guth, Global carbon dioxide emissions from inland waters. *Nature* **503**, 355–359 (2013).
- H. O. Sawakuchi, V. Neu, N. D. Ward, M. de Lourdes C. Barros, A. M. Valerio, W. Gagne-Maynard, A. C. Cunha, D. F. S. Less, J. E. M. Diniz, D. C. Brito, A. V. Kruscheand, J. E. Richey, Carbon dioxide emissions along the lower Amazon River. *Front. Mar. Sci.* **4**, 76 (2017).
- I. J. Wright, N. Dong, V. Maire, I. C. Prentice, M. Westoby, S. Diaz, R. V. Gallagher, B. F. Jacobs, R. Kooyman, E. A. Law, M. R. Leishman, Ü. Niinemets, P. B. Reich, L. Sack, R. Villar, H. Wang, P. Wilf, Global climatic drivers of leaf size. *Science* **357**, 917–921 (2017).
- P. B. Reich, J. Oleksyn, Global patterns of plant leaf N and P in relation to temperature and latitude. *Proc. Natl. Acad. Sci. U.S.A.* **101**, 11001–11006 (2004).
- L. Boyero, M. A. S. Graça, A. M. Tonin, J. Pérez, A. J. Swafford, V. Ferreira, A. Landeira-Dabarca, M. A. Alexandrou, M. O. Gessner, B. G. McKie, R. J. Albariño, L. A. Barmuta, M. Callisto, J. Chará, E. Chauvet, C. Colón-Gaud, D. Dudgeon, A. C. Encalada, R. Figueroa, A. S. Flecker, T. Fleituch, A. Frainer, José F. Gonçalves Jr., J. E. Helson, T. Iwata, J. Mathooko, C. M'Erumba, C. M. Pringle, A. Ramirez, C. M. Swan, C. M. Yule, R. G. Pearson, Riparian plant litter quality increases with latitude. *Sci. Rep.* **7**, 10562 (2017).
- C. V. Baxter, K. D. Fausch, W. C. Saunders, Tangled webs: Reciprocal flows of invertebrate prey link streams and riparian zones. *Freshw. Biol.* **50**, 201–220 (2005).
- S. D. Langhans, S. D. Tiegs, M. O. Gessner, K. Tockner, Leaf-decomposition heterogeneity across a riverine floodplain mosaic. *Aquat. Sci.* **70**, 337–346 (2008).
- G. Yvon-Durocher, J. M. Caffrey, A. Cescatti, M. Dossena, Paul del Giorgio, J. M. Gasol, J. M. Montoya, J. Pumpanen, P. A. Staehr, M. Trimmer, G. Woodward, A. P. Allen, Reconciling the temperature dependence of respiration across timescales and ecosystem types. *Nature* **487**, 472–476 (2012).
- J. H. Brown, J. F. Gillooly, A. P. Allen, V. M. Savage, G. B. West, Toward a metabolic theory of ecology. *Ecology* **85**, 1771–1789 (2004).
- Intergovernmental Panel on Climate Change, Climate change 2014: Synthesis report, in *Contribution of Working Groups I, II and III to the Fifth Assessment Report of the Intergovernmental Panel on Climate Change*, Core Writing Team, R. K. Pachauri, L. A. Meyer, Eds. (Intergovernmental Panel on Climate Change, 2014).
- D. F. Doak, D. Bigger, E. K. Harding, M. A. Marvier, R. E. O'Malley, D. Thomson, The statistical inevitability of stability-diversity relationships in community ecology. *Am. Nat.* **151**, 264–276 (1998).
- M. O. Gessner, E. Chauvet, A case for using litter breakdown to assess functional stream integrity. *Ecol. Appl.* **12**, 498–510 (2002).
- N. A. Griffiths, S. D. Tiegs, Organic-matter decomposition along a temperature gradient in a forested headwater stream. *Freshw. Sci.* **35**, 518–533 (2016).
- D. M. Olson, E. Dinerstein, E. D. Wikramanayake, N. D. Burgess, G. V. N. Powell, E. C. Underwood, Jennifer A. D'Amico, I. Itoua, H. E. Strand, J. C. Morrison, C. J. Loucks, T. F. Allnutt, T. H. Ricketts, Y. Kura, J. F. Lamoreux, W. W. Wettengel, P. Hedao, K. R. Kassem, Terrestrial ecoregions of the world: A new map of life on earth. *BioScience* **51**, 933–938 (2001).
- N. Hobbs, M. Hooten, *Bayesian Models: A Statistical Primer for Ecologists* (Princeton Univ. Press, 2015).
- A. Gelman, I. Pardoe, Bayesian measures of explained variance and pooling in multilevel (hierarchical) models. *Technometrics* **48**, 241–251 (2006).

Acknowledgments: We thank the large number of assistants who helped deploy the cotton strip assay in the field and G. Moeen and M. Moeen for preparing the cotton strips and performing a large number of tensile strength measurements. **Funding:** This research was supported by awards to S.D.T. from the Ecuadorian Ministry of Science [Secretaría de Educación Superior Ciencia, Tecnología e Innovación (SENESCYT)] through the PROMETEO scholar exchange program, the Oakland University Research Development Grant program, and a Huron Mountain Wildlife Foundation research grant. N.A.G. was supported by the U.S. Department of Energy's Office of Science, Biological and Environmental Research. Oak Ridge National Laboratory is managed by UT-Battelle, LLC, for the U.S. Department of Energy under contract DE-AC05-00OR22725. We are grateful for open-access-publishing funds from Kresge Library at Oakland University and Queen's University Belfast. **Author contributions:** This work was conducted by the CELLDLEX Consortium. Each member oversaw the execution of the field assay in at least four rivers and four riparian zones. This involved site selection, deployment, and retrieval of the cotton strips in the field, processing of field samples, site characterization, and processing temperature data. Other contributions are as follows. D.S. performed GIS analysis and assisted with the creation of the map in Fig. 1. D.E. oversaw the distribution of cotton strips to consortium members, coordinated the consolidation of temperature data, and oversaw sample processing. M.W.I. oversaw analysis of the temperature data, summarizations of temperature data, and writing R and Python code for temperature data batch processing. E.C., D.M.C., N.A.G., A.S.F., M.O.G., P.B.M., and G.W. assisted with writing the manuscript by providing substantial comments and edits on earlier iterations; many other CELLDLEX partners also commented. D.M.C. performed statistical analyses and data presentation and wrote the statistical analysis section. S.D.T. wrote the manuscript, performed statistical analysis and data presentation, and coordinated the project. **Competing interests:** The authors declare that they have no competing interests. **Data and materials availability:** All data needed to evaluate the conclusions in the paper are present in the paper and/or the

Supplementary Materials. All data presented here and model code are available at <https://github.com/dmcostello/CELLEX2018>. Additional data related to this paper may be requested from the authors.

Submitted 8 August 2018

Accepted 29 November 2018

Published 9 January 2019

10.1126/sciadv.aav0486

Citation: S. D. Tiegs, D. M. Costello, M. W. Isken, G. Woodward, P. B. McIntyre, M. O. Gessner, E. Chauvet, N. A. Griffiths, A. S. Flecker, V. Acuña, R. Albariño, D. C. Allen, C. Alonso, P. Andino, C. Arango, J. Aroviita, M. V. M. Barbosa, L. A. Barmuta, C. V. Baxter, T. D. C. Bell, B. Bellinger, L. Boyero, L. E. Brown, A. Bruder, D. A. Bruesewitz, F. J. Burdon, M. Callisto, C. Canhoto, K. A. Capps, M. M. Castillo, J. Clapcott, F. Colas, C. Colón-Gaud, J. Cornut, V. Crespo-Pérez, W. F. Cross, J. M. Culp, M. Danger, O. Dangles, E. de Eyto, A. M. Derry, V. D. Villanueva, M. M. Douglas, A. Elosegí, A. C. Encalada, S. Entrekin, R. Espinosa, D. Ethaiya, V. Ferreira, C. Ferriol, K. M. Flanagan,

T. Fleituch, J. J. Follstad Shah, A. F. Barbosa, N. Friberg, P. C. Frost, E. A. Garcia, L. García Lago, P. E. García Soto, S. Ghate, D. P. Giling, A. Gilmer, J. F. Gonçalves Jr., R. K. Gonzales, M. A. S. Graça, M. Grace, H.-P. Grossart, F. Guérold, V. Gulis, L. U. Hepp, S. Higgins, T. Hishi, J. Huddart, J. Hudson, S. Imberger, C. Iñiguez-Armijos, T. Iwata, D. J. Janetski, E. Jennings, A. E. Kirkwood, A. A. Koning, S. Kosten, K. A. Kuehn, H. Laudon, P. R. Leavitt, A. L. Lemes da Silva, S. J. Leroux, C. J. LeRoy, P. J. Lisi, R. MacKenzie, A. M. Marcarelli, F. O. Masese, B. G. McKie, A. O. Medeiros, K. Meissner, M. Miliša, S. Mishra, Y. Miyake, A. Moerke, S. Mombrikotb, R. Mooney, T. Moulton, T. Muotka, J. N. Negishi, V. Neres-Lima, M. L. Nieminen, J. Nimptsch, J. Ondruch, R. Paavola, I. Pardo, C. J. Patrick, E. T. H. M. Peeters, J. Pozo, C. Pringle, A. Prussian, E. Quenta, A. Quesada, B. Reid, J. S. Richardson, A. Rigosi, J. Rincón, G. Rişnoveanu, C. T. Robinson, L. Rodríguez-Gallego, T. V. Royer, J. A. Rusak, A. C. Santamans, G. B. Selmeczy, G. Simiyu, A. Skuja, J. Smykla, K. R. Sridhar, R. Sponseller, A. Stoler, C. M. Swan, D. Szlag, F. Teixeira-de Mello, J. D. Tonkin, S. Uusheimo, A. M. Veach, S. Vilbaste, L. B. M. Vought, C.-P. Wang, J. R. Webster, P. B. Wilson, S. Woelfl, M. A. Xenopoulos, A. G. Yates, C. Yoshimura, C. M. Yule, Y. X. Zhang, J. A. Zwart, Global patterns and drivers of ecosystem functioning in rivers and riparian zones. *Sci. Adv.* **5**, eaav0486 (2019).

Global patterns and drivers of ecosystem functioning in rivers and riparian zones

Scott D. Tiegs, David M. Costello, Mark W. Isken, Guy Woodward, Peter B. McIntyre, Mark O. Gessner, Eric Chauvet, Natalie A. Griffiths, Alex S. Flecker, Vicens Acuña, Ricardo Albariño, Daniel C. Allen, Cecilia Alonso, Patricio Andino, Clay Arango, Jukka Aroviita, Marcus V. M. Barbosa, Leon A. Barmuta, Colden V. Baxter, Thomas D. C. Bell, Brent Bellinger, Luz Boyero, Lee E. Brown, Andreas Bruder, Denise A. Bruesewitz, Francis J. Burdon, Marcos Callisto, Cristina Canhoto, Krista A. Capps, María M. Castillo, Joanne Clapcott, Fanny Colas, Checo Colón-Gaud, Julien Cornut, Verónica Crespo-Pérez, Wyatt F. Cross, Joseph M. Culp, Michael Danger, Olivier Dangles, Elvira de Eyto, Alison M. Derry, Veronica Díaz Villanueva, Michael M. Douglas, Arturo Elosegui, Andrea C. Encalada, Sally Entrekin, Rodrigo Espinosa, Diana Ethaiya, Verónica Ferreira, Carmen Ferriol, Kyla M. Flanagan, Tadeusz Fleituch, Jennifer J. Follstad Shah, André Frainer Barbosa, Nikolai Friberg, Paul C. Frost, Erica A. García, Lilita García Lago, Pavel Ernesto García Soto, Sudeep Ghate, Darren P. Giling, Alan Gilmer, José Francisco Gonçalves, Jr., Rosario Karina Gonzales, Manuel A. S. Graça, Mike Grace, Hans-Peter Grossart, François Guérol, Vlad Gulis, Luiz U. Hepp, Scott Higgins, Takuo Hishi, Joseph Huddart, John Hudson, Samantha Imberger, Carlos Iñiguez-Armijos, Tomoya Iwata, David J. Janetski, Eleanor Jennings, Andrea E. Kirkwood, Aaron A. Koning, Sarian Kosten, Kevin A. Kuehn, Hjalmar Laudon, Peter R. Leavitt, Aurea L. Lemes da Silva, Shawn J. Leroux, Carri J. LeRoy, Peter J. Lisi, Richard MacKenzie, Amy M. Marcarelli, Frank O. Masese, Brendan G. McKie, Adriana Oliveira Medeiros, Kristian Meissner, Marko Milisa, Shailendra Mishra, Yo Miyake, Ashley Moerke, Shorok Mombrikotb, Rob Mooney, Tim Moulton, Timo Muotka, Junjiro N. Negishi, Vinicius Neres-Lima, Mika L. Nieminen, Jorge Nimptsch, Jakub Ondruch, Riku Paavola, Isabel Pardo, Christopher J. Patrick, Edwin T. H. M. Peeters, Jesus Pozo, Catherine Pringle, Aaron Prussian, Estefania Quenta, Antonio Quesada, Brian Reid, John S. Richardson, Anna Rigosi, José Rincón, Geta Rîsnoveanu, Christopher T. Robinson, Lorena Rodríguez-Gallego, Todd V. Royer, James A. Rusak, Anna C. Santamans, Géza B. Selmeçy, Gelas Simiyu, Agnija Skuja, Jerzy Smykla, Kandikere R. Sridhar, Ryan Sponseller, Aaron Stoler, Christopher M. Swan, David Szlag, Franco Teixeira-de Mello, Jonathan D. Tonkin, Sari Uusheimo, Allison M. Veach, Sirje Vilbaste, Lena B. M. Vought, Chiao-Ping Wang, Jackson R. Webster, Paul B. Wilson, Stefan Woelfl, Marguerite A. Xenopoulos, Adam G. Yates, Chihiro Yoshimura, Catherine M. Yule, Yixin X. Zhang and Jacob A. Zwart

Sci Adv 5 (1), eaav0486.
DOI: 10.1126/sciadv.aav0486

ARTICLE TOOLS	http://advances.sciencemag.org/content/5/1/eaav0486
SUPPLEMENTARY MATERIALS	http://advances.sciencemag.org/content/suppl/2019/01/07/5.1.eaav0486.DC1
REFERENCES	This article cites 26 articles, 4 of which you can access for free http://advances.sciencemag.org/content/5/1/eaav0486#BIBL
PERMISSIONS	http://www.sciencemag.org/help/reprints-and-permissions

Use of this article is subject to the [Terms of Service](#)

Science Advances (ISSN 2375-2548) is published by the American Association for the Advancement of Science, 1200 New York Avenue NW, Washington, DC 20005. 2017 © The Authors, some rights reserved; exclusive licensee American Association for the Advancement of Science. No claim to original U.S. Government Works. The title *Science Advances* is a registered trademark of AAAS.

Supplementary Materials for

Global patterns and drivers of ecosystem functioning in rivers and riparian zones

Scott D. Tiegs^{1*}, David M. Costello², Mark W. Isken³, Guy Woodward⁴, Peter B. McIntyre⁵, Mark O. Gessner⁶, Eric Chauvet⁷, Natalie A. Griffiths⁸, Alex S. Flecker⁵, Vicenç Acuña⁹, Ricardo Albariño¹⁰, Daniel C. Allen¹¹, Cecilia Alonso¹², Patricio Andino¹³, Clay Arango¹⁴, Jukka Aroviita¹⁵, Marcus V. M. Barbosa¹⁶, Leon A. Barmuta¹⁷, Colden V. Baxter¹⁸, Thomas D. C. Bell⁴, Brent Bellinger¹⁹, Luz Boyero²⁰, Lee E. Brown²¹, Andreas Bruder²², Denise A. Bruesewitz²³, Francis J. Burdon²⁴, Marcos Callisto²⁵, Cristina Canhoto²⁶, Krista A. Capps²⁷, María M. Castillo²⁸, Joanne Clapcott²⁹, Fanny Colas³⁰, Checo Colón-Gaud³¹, Julien Cornut³², Verónica Crespo-Pérez¹³, Wyatt F. Cross³³, Joseph M. Culp³⁴, Michael Danger³⁵, Olivier Dangles³⁶, Elvira de Eyto³⁷, Alison M. Derry³⁸, Veronica Díaz Villanueva³⁹, Michael M. Douglas⁴⁰, Arturo Elosegui²⁰, Andrea C. Encalada⁴¹, Sally Entekin⁴², Rodrigo Espinosa¹³, Diana Ethaiya¹, Verónica Ferreira⁴³, Carmen Ferriol⁴⁴, Kyla M. Flanagan⁴⁵, Tadeusz Fleituch⁴⁶, Jennifer J. Follstad Shah⁴⁷, André Frainer Barbosa⁴⁸, Nikolai Friberg^{49,50}, Paul C. Frost⁵¹, Erica A. Garcia⁵², Liliana García Lago⁵³, Pavel Ernesto García Soto⁵⁴, Sudeep Ghate⁵⁵, Darren P. Giling⁵⁶, Alan Gilmer⁵⁷, José Francisco Gonçalves Jr.⁵⁸, Rosario Karina Gonzales⁵⁹, Manuel A. S. Graça⁴³, Mike Grace⁶⁰, Hans-Peter Grossart^{61,62}, François Guérol⁶³, Vlad Gulis⁶⁴, Luiz U. Hepp⁶⁵, Scott Higgins⁶⁶, Takuo Hishi⁶⁷, Joseph Huddart⁶⁸, John Hudson⁶⁹, Samantha Imberger⁷⁰, Carlos Iñiguez-Armijos⁷¹, Tomoya Iwata⁷², David J. Janetski⁷³, Eleanor Jennings⁷⁴, Andrea E. Kirkwood⁷⁵, Aaron A. Koning⁷⁶, Sarian Kosten⁷⁷, Kevin A. Kuehn⁷⁸, Hjalmar Laudon⁷⁹, Peter R. Leavitt^{80,81}, Aurea L. Lemes da Silva⁸², Shawn J. Leroux⁸³, Carri J. LeRoy⁸⁴, Peter J. Lisi⁷⁶, Richard MacKenzie⁸⁵, Amy M. Marcarelli⁸⁶, Frank O. Masese⁸⁷, Brendan G. McKie⁸⁸, Adriana Oliveira Medeiros⁸⁹, Kristian Meissner⁹⁰, Marko Miliša⁹¹, Shailendra Mishra⁹², Yo Miyake⁹³, Ashley Moerke⁹⁴, Shorok Mombrikotb⁴, Rob Mooney⁷⁶, Tim Moulton⁹⁵, Timo Muotka⁹⁶, Junjiro N. Negishi⁹⁷, Vinicius Neres-Lima⁹⁵, Mika L. Nieminen⁹⁸, Jorge Nimptsch⁹⁹, Jakob Ondruch¹⁰⁰, Riku Paavola¹⁰¹, Isabel Pardo⁵³, Christopher J. Patrick¹⁰², Edwin T. H. M. Peeters¹⁰³, Jesus Pozo²⁰, Catherine Pringle¹⁰⁴, Aaron Prussian¹⁰⁵, Estefania Quenta⁵⁹, Antonio Quesada¹⁰⁶, Brian Reid¹⁰⁷, John S. Richardson¹⁰⁸, Anna Rigosi¹⁰⁹, José Rincón¹¹⁰, Geta Rîșnoveanu¹¹¹, Christopher T. Robinson¹¹², Lorena Rodríguez-Gallego¹¹³, Todd V. Royer¹¹⁴, James A. Rusak¹¹⁵, Anna C. Santamans¹¹⁶, Géza B. Selmeçy¹¹⁷, Gelas Simiyu¹¹⁸, Agnija Skuja¹¹⁹, Jerzy Smykla⁴⁶, Kandikere R. Sridhar⁵⁵, Ryan Sponseller¹²⁰, Aaron Stoler¹²¹, Christopher M. Swan¹²², David Szlag¹²³, Franco Teixeira-de Mello¹²⁴, Jonathan D. Tonkin¹²⁵, Sari Uusheimo¹²⁶, Allison M. Veach¹²⁷, Sirje Vilbaste¹²⁸, Lena B. M. Vought¹²⁹, Chiao-Ping Wang¹³⁰, Jackson R. Webster¹³¹, Paul B. Wilson¹³², Stefan Woelfl⁹⁹, Marguerite A. Xenopoulos⁵¹, Adam G. Yates¹³³, Chihiro Yoshimura¹³⁴, Catherine M. Yule¹³⁵, Yixin X. Zhang¹³⁶, Jacob A. Zwart¹³⁷

¹Department of Biological Sciences, Oakland University, Rochester, MI, USA. ²Department of Biological Sciences, Kent State University, Kent, OH, USA. ³Department of Decision and Information Sciences, Oakland University, Rochester, MI, USA. ⁴Department of Life Sciences, Imperial College London, London, UK. ⁵Department of Ecology and Evolutionary Biology, Cornell University, Ithaca, NY, USA. ⁶Department of Experimental Limnology, Leibniz Institute of Freshwater Ecology and Inland Fisheries (IGB), Berlin Institute of Technology (TU Berlin), Berlin, Germany. ⁷Laboratory Functional Ecology and Environment (EcoLab), Université de Toulouse, CNRS, Toulouse, France. ⁸Climate Change Science Institute and Environmental Sciences Division, Oak Ridge National Laboratory, Oak Ridge, TN, USA. ⁹Catalan Institute for Water Research, Girona, Spain. ¹⁰INIBIOMA (UNCmahue - CONICET), Universidad Nacional Comahue, Bariloche, Argentina. ¹¹Department of Biology, University of Oklahoma, Norman, OK, USA. ¹²University Center of the Eastern Region, University of the Republic, Punta del Este, Uruguay. ¹³Limnology Laboratory, QCAZ-I Museum, School of Biological Sciences, Pontifical Catholic University of Ecuador, Quito, Ecuador. ¹⁴Department of Biological Sciences, Central Washington University, Ellensburg, WA, USA. ¹⁵Finnish Environment Institute (SYKE), Oulu, Finland. ¹⁶Laboratory of Environmental Microbiology, Federal University of Tocantins, Palmas, Brazil. ¹⁷Department of Biological Sciences, University of Tasmania, Hobart, Australia. ¹⁸Department of Biology, Idaho State University, Pocatello, ID, USA. ¹⁹Watershed Protection Department, City of Austin, TX, USA. ²⁰Department of Plant Biology and Ecology, University of the Basque Country (UPV/EHU), Bilbao, Spain. ²¹School of Geography, water@leeds, University of Leeds, Leeds, UK. ²²Laboratory of Applied Microbiology, University of Applied Sciences and Arts of Southern Switzerland, Manno, Switzerland. ²³Environmental Studies Program,

Colby College, Waterville, ME, USA. ²⁴Swiss Federal Institute of Aquatic Science and Technology, Dübendorf, Switzerland. ²⁵General Biology Department of Institute of Biological Sciences, Universidade Federal de Minas Gerais, Belo Horizonte, Brazil. ²⁶Center for Functional Ecology, Department of Life Sciences, University of Coimbra, Coimbra, Portugal. ²⁷Odum School of Ecology and the Savannah River Ecology Laboratory, University of Georgia, Athens, GA, USA. ²⁸Departamento de Ciencias de la Sustentabilidad, El Colegio de la Frontera Sur, Villahermosa, México. ²⁹Cawthron Institute, Nelson, New Zealand. ³⁰Irstea, UR RECOVER, Pôle AFB-Irstea Hydroécologie des plans d'eau, Aix en Provence, France. ³¹Department of Biology, Georgia Southern University, Statesboro, GA, USA. ³²Institute of Earth Sciences, University of Applied Sciences and Arts of Southern Switzerland, Canobbio, Switzerland. ³³Department of Ecology, Montana State University, Bozeman, MT, USA. ³⁴Environment & Climate Change Canada, Geography & Environmental Studies, and Department of Biology, Wilfrid Laurier University, Waterloo, Canada. ³⁵LIEC-CNRS, University of Lorraine, Nancy and Metz, France. ³⁶Centre d'Ecologie Fonctionnelle et Evolutive, IRD, CNRS, Université de Montpellier, Université Paul Valéry, Montpellier, France. ³⁷Marine Institute, Newport, Ireland. ³⁸Department of Biological Sciences, Université du Québec à Montréal, Montréal, Canada. ³⁹Laboratory of Limnology, INIBIOMA-CONICET, Bariloche, Argentina. ⁴⁰National Environmental Science Program, School of Biological Sciences and School of Agriculture and Environment, University of Western Australia, Crawley, Australia. ⁴¹Instituto BIOSFERA, Colegio de Ciencias Biológicas y Ambientales, Universidad San Francisco de Quito, Quito, Ecuador. ⁴²Department of Entomology, Virginia Tech, Blacksburg, VA, USA. ⁴³Department of Life Sciences and MARE—Marine and Environmental Sciences Centre, University of Coimbra, Coimbra, Portugal. ⁴⁴Department of Microbiology and Ecology, University of Valencia, Burjassot, Spain. ⁴⁵Department of Biological Sciences, University of Calgary, Calgary, Canada. ⁴⁶Institute of Nature Conservation, Polish Academy of Sciences, Kraków, Poland. ⁴⁷Department of Geography, Environmental and Sustainability Studies Program, University of Utah, Salt Lake City, UT, USA. ⁴⁸Department of Arctic and Marine Biology, UiT The Arctic University of Norway, Tromsø, Norway. ⁴⁹Norsk Institutt for Vannforskning (NIVA), Oslo, Norway. ⁵⁰University of Copenhagen, Copenhagen, Denmark. ⁵¹Department of Biology, Trent University, Peterborough, Canada. ⁵²Research Institute for the Environment and Livelihoods, Charles Darwin University, Casuarina, Australia. ⁵³Department of Ecology and Animal Biology, University of Vigo, Pontevedra, Spain. ⁵⁴Department of Biology, University of San Carlos of Guatemala, Guatemala, Guatemala. ⁵⁵Department of Biosciences, Mangalore University, Konaje, India. ⁵⁶Leibniz Institute of Freshwater Ecology and Inland Fisheries (IGB), Stechlin, Germany. ⁵⁷Environmental Sustainability and Health Institute, Dublin Institute of Technology, Dublin, Ireland. ⁵⁸Department of Ecology, University of Brazil, Brasília, Brazil. ⁵⁹Institute of Ecology, University of San Andrés, La Paz, Bolivia. ⁶⁰Water Studies Centre, School of Chemistry, Monash University, Clayton, Victoria, Australia. ⁶¹Leibniz Institute of Freshwater Ecology and Inland Fisheries (IGB), Department Experimental Limnology, Stechlin, Germany. ⁶²Potsdam University, Institute for Biochemistry and Biology, Potsdam, Germany. ⁶³LIEC-CNRS, Université de Lorraine, Metz, France. ⁶⁴Department of Biology, Coastal Carolina University, Conway, SC, USA. ⁶⁵Department of Biological Sciences, Regional Integrated University of Upper Uruguay and Missions, Erechim, Brazil. ⁶⁶IISD Experimental Lakes Area Inc., Winnipeg, Canada. ⁶⁷Shiiba Research Forest, Kyushu University, Fukuoka, Japan. ⁶⁸Department of Life Sciences, Imperial College London, Ascot, UK. ⁶⁹Aquatics Alaska, Juneau, AK, USA. ⁷⁰School of Ecosystem and Forest Sciences, The University of Melbourne, Richmond, Australia. ⁷¹Departamento de Ciencias Biológicas, Universidad Técnica Particular de Loja, Loja, Ecuador. ⁷²Department of Environmental Sciences, University of Yamanashi, Yamanashi, Japan. ⁷³Department of Biology, Indiana University of Pennsylvania, Indiana, PA, USA. ⁷⁴Dundalk Institute of Technology, Dundalk, Ireland. ⁷⁵Faculty of Science, University of Ontario Institute of Technology, Oshawa, Canada. ⁷⁶Center for Limnology, University of Wisconsin, Madison, WI, USA. ⁷⁷Department of Aquatic Ecology and Environmental Biology, Institute for Water and Wetland Research, Radboud University, Nijmegen, Netherlands. ⁷⁸School of Biological, Environmental and Earth Sciences, University of Southern Mississippi, Hattiesburg, MS, USA. ⁷⁹Forest Ecology and Management, Swedish University of Agricultural Sciences, Umeå, Sweden. ⁸⁰Department of Biology, University of Regina, Regina, Canada. ⁸¹Queen's University Belfast, Belfast, UK. ⁸²Department of Ecology and Zoology, Federal University of Santa Catarina, Florianópolis, Brazil. ⁸³Department of Biology, Memorial University of Newfoundland, Saint John, Canada. ⁸⁴Environmental Studies Program, The Evergreen State College, Olympia, WA, USA. ⁸⁵Institute of Pacific Islands Forestry, USDA Forest Service, Pacific Southwest Research Station, Hilo, HI, USA. ⁸⁶Department of Biological Sciences, Michigan Technological University, Houghton, MI, USA. ⁸⁷Department of Fisheries and Aquatic Sciences, University of Eldoret, Eldoret, Kenya. ⁸⁸Department of Aquatic Sciences and Assessment, Section for Ecology and Biodiversity, Swedish University of Agricultural Sciences, Uppsala, Sweden. ⁸⁹Institute of Biology, Laboratory of Environmental Microbiology, Federal University of Bahia, Salvador, Brazil. ⁹⁰Programme for Environmental Information, Finnish Environment Institute (SYKE), Jyväskylä, Finland. ⁹¹Department of Biology, University of Zagreb, Zagreb, Croatia. ⁹²Asian School of the Environment, Nanyang Technological University, Singapore, Singapore. ⁹³Graduate School of Science and Engineering, Ehime University, Matsuyama, Japan. ⁹⁴Center for Freshwater Research and Education, Lake Superior State University, Sault Ste. Marie, MI, USA. ⁹⁵Departamento de Ecologia, Rio de Janeiro State University, Rio de Janeiro, Brazil. ⁹⁶Department of Ecology and Genetics, University of Oulu, Oulu, Finland. ⁹⁷Faculty of Environmental Earth Science, Hokkaido University, Sapporo, Japan. ⁹⁸Department of Biological and Environmental Science, University of Jyväskylä, Tampere, Finland. ⁹⁹Instituto de Ciencias Marinas y Limnológicas, Universidad Austral de Chile, Valdivia, Chile. ¹⁰⁰Department of Geography, Masaryk University, Brno, Czech Republic. ¹⁰¹Oulanka Research Station, University of Oulu, Oulu, Finland. ¹⁰²Department of Life Sciences, Texas A&M University—Corpus Christi, Corpus Christi, TX, USA. ¹⁰³Aquatic

Ecology and Water Quality Management Group, Wageningen University, Wageningen, Netherlands. ¹⁰⁴Odum School of Ecology, University of Georgia, Athens, GA, USA. ¹⁰⁵U.S. Forest Service, Tongass National Forest, Sitka, AK, USA. ¹⁰⁶Department of Biology, Autonomous University of Madrid, Madrid, Spain. ¹⁰⁷Research Center on Ecosystems of Patagonia, Centro de Investigacion en Ecosistemas de la Patagonia, Coyhaique, Chile. ¹⁰⁸Department of Forest and Conservation Sciences, University of British Columbia, Vancouver, Canada. ¹⁰⁹Water Research Centre, Environment Institute, School of Earth and Environmental Science, University of Adelaide, Adelaide, South Australia. ¹¹⁰Departamento de Biología, Facultad de Ciencias, Universidad del Zulia, Cuenca, Venezuela. ¹¹¹Department of Systems Ecology, University of Bucharest, Bucharest, Romania. ¹¹²Department of Aquatic Ecology, Eawag: Swiss Federal Institute of Aquatic Science and Technology, Dübendorf, Switzerland. ¹¹³Centro Universitario Regional del Este, Ecología Funcional de Sistemas Acuáticos, Treinta y Tres, Uruguay. ¹¹⁴School of Public and Environmental Affairs, Indiana University, Bloomington, IN, USA. ¹¹⁵Dorset Environmental Science Centre, Ontario Ministry of the Environment and Climate Change, Dorset, Canada. ¹¹⁶Cavanilles Institute for Biodiversity and Evolutionary Biology, University of Valencia, Valencia, Spain. ¹¹⁷Department of Limnology, University of Pannonia, Veszprém, Hungary. ¹¹⁸School of Environmental Studies, University of Eldoret, Eldoret, Kenya. ¹¹⁹Institute of Biology, University of Latvia, Salaspils, Latvia. ¹²⁰Department of Ecology and Environmental Science, Umeå University, Umeå, Sweden. ¹²¹School of Natural Sciences and Mathematics, Stockton University, Galloway, NJ, USA. ¹²²Department of Geography & Environmental Systems, University of Maryland Baltimore County, Baltimore, MD, USA. ¹²³Department of Chemistry, Oakland University, Rochester, MI, USA. ¹²⁴Departamento de Ecología y Gestión Ambiental, Centro Universitario de la Región Este, Universidad de la República de Uruguay, Treinta y Tres, Uruguay. ¹²⁵School of Biological Sciences, University of Canterbury, Christchurch, New Zealand. ¹²⁶Lammi Biological Station, University of Helsinki, Lammi, Finland. ¹²⁷Biosciences Division, Oak Ridge National Laboratory, Oak Ridge, TN, USA. ¹²⁸Institute of Agricultural and Environmental Science, Estonian University of Life Sciences, Tartu, Estonia. ¹²⁹Department of Environmental Science and Bioscience, Kristianstad University, Kristianstad, Sweden. ¹³⁰Division of Silviculture, Taiwan Forestry Research Institute, Taipei, Taiwan. ¹³¹Department of Biological Sciences, Virginia Tech, Blacksburg, VA, USA. ¹³²Department of Biological Sciences, East Stroudsburg University, Stroudsburg, PA, USA. ¹³³Department of Geography, Western University and Canadian Rivers Institute, London, Canada. ¹³⁴Department of Civil and Environmental Engineering, Tokyo Institute of Technology, Tokyo, Japan. ¹³⁵School of Science and Engineering, University of the Sunshine Coast, Sippy Downs, Australia. ¹³⁶Department of Health and Environmental Sciences, Xi'an Jiaotong-Liverpool University, Suzhou, China. ¹³⁷Department of Biological Sciences, University of Notre Dame, South Bend, IN, USA.

*Corresponding author. Email: tiegs@oakland.edu

Published 9 January 2019, *Sci. Adv.* **5**, eaav0486 (2019)
DOI: 10.1126/sciadv.aav0486

This PDF file includes:

- Fig. S1. Exponential increase in the number of articles addressing organic matter decomposition in rivers during the past two decades.
- Fig. S2. Scatterplot of decomposition rates per day in rivers versus riparian zones and a 1:1 line.
- Fig. S3. Relative carbon processing rates between rivers and their riparian zones across latitudes.

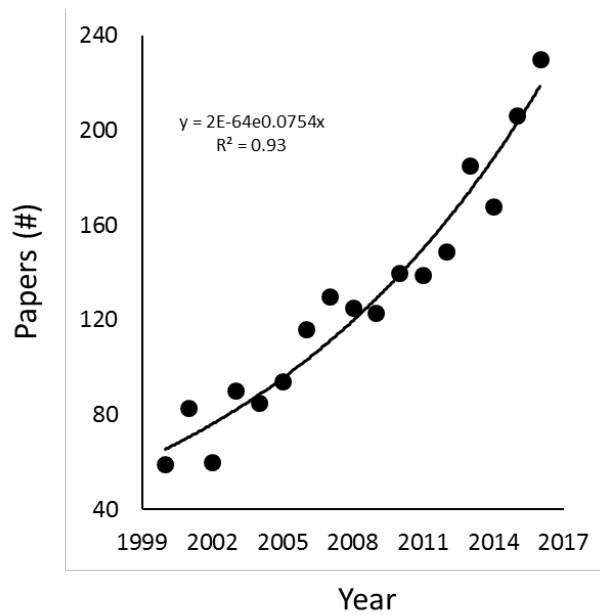


Fig. S1. Exponential increase in the number of articles addressing organic matter decomposition in rivers during the past two decades. Results are based on the Boolean search string “(breakdown OR decomposition) AND (stream OR river) AND (leaf OR organic matter OR litter)” entered in the ISI Web of Science during December 2017. Results revealed 2,182 individual publications from 2000 and 2016, and a strong positive relationship between the number of studies published per year and time ($R^2=0.93$, $p<0.0001$, $n=17$).

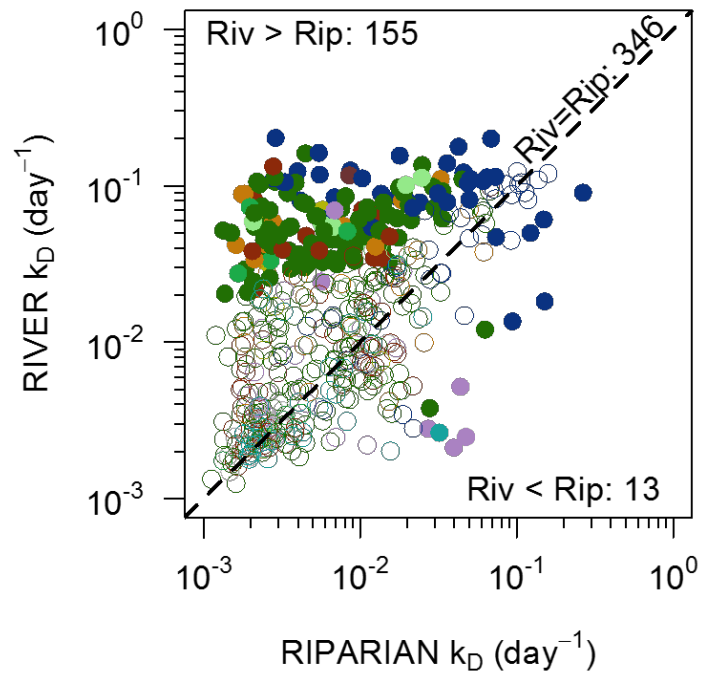


Fig. S2. Scatterplot of decomposition rates per day in rivers versus riparian zones and a 1:1 line. Solid data points above the 1:1 have decomposition rates in rivers that are significantly greater than those in riparian zones ($n=155$ river-riparian pairs); solid data points below the 1:1 indicate decomposition rates that are significantly more rapid in riparian zones than their rivers ($n=13$). Open data points overlap with the 1:1 line indicating that decay rates do not differ between these two habitats ($n=346$). Colors match the biomes shown in Fig. 1.

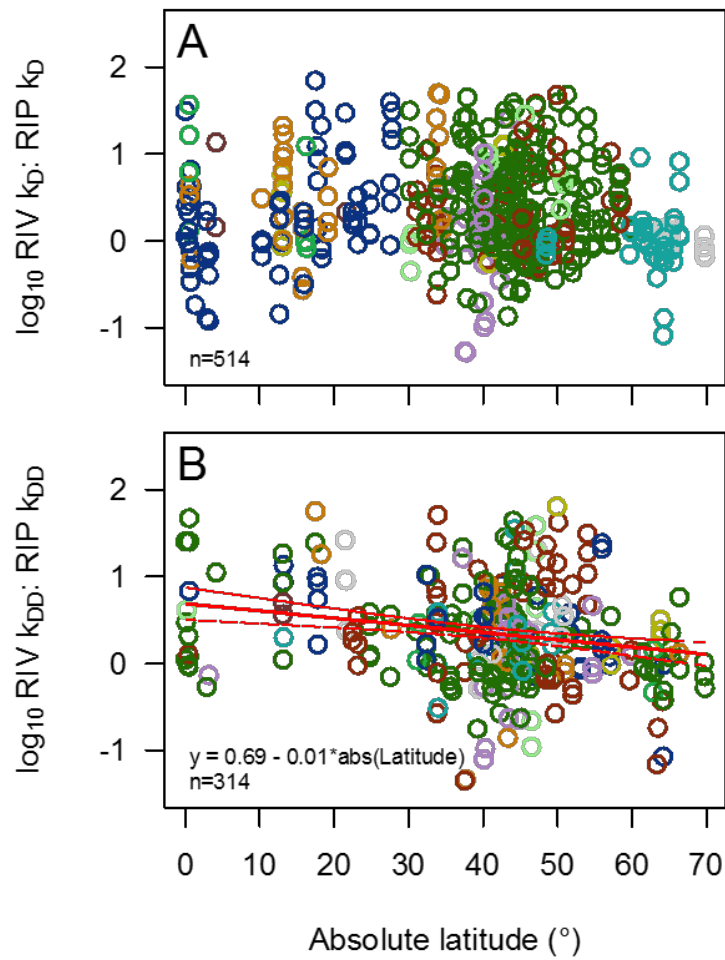


Fig. S3. Relative carbon processing rates between rivers and their riparian zones across latitudes. Rates are expressed as the ratio river:riparian. No relationship was found between decomposition rates expressed on a per day basis and latitude (A), but when temperature-normalized data were examined (i.e., rates were expressed on a per-degree-day basis), a significant negative relationship emerged.